

Certificate of Analysis

Enclomiphene

2-[4-[(E)-2-chloro-1,2-diphenylethenyl]phenoxy]-N,N-diethylethanamine

Compound : Enclomiphene
Lot number : 2024-07-30
Analysis date : 2024-08-20
Purity % : 99.48%
Method : HPLC-UV-MS

Client : Amino USA
www.aminousa.com

PubChem CID: 6420009

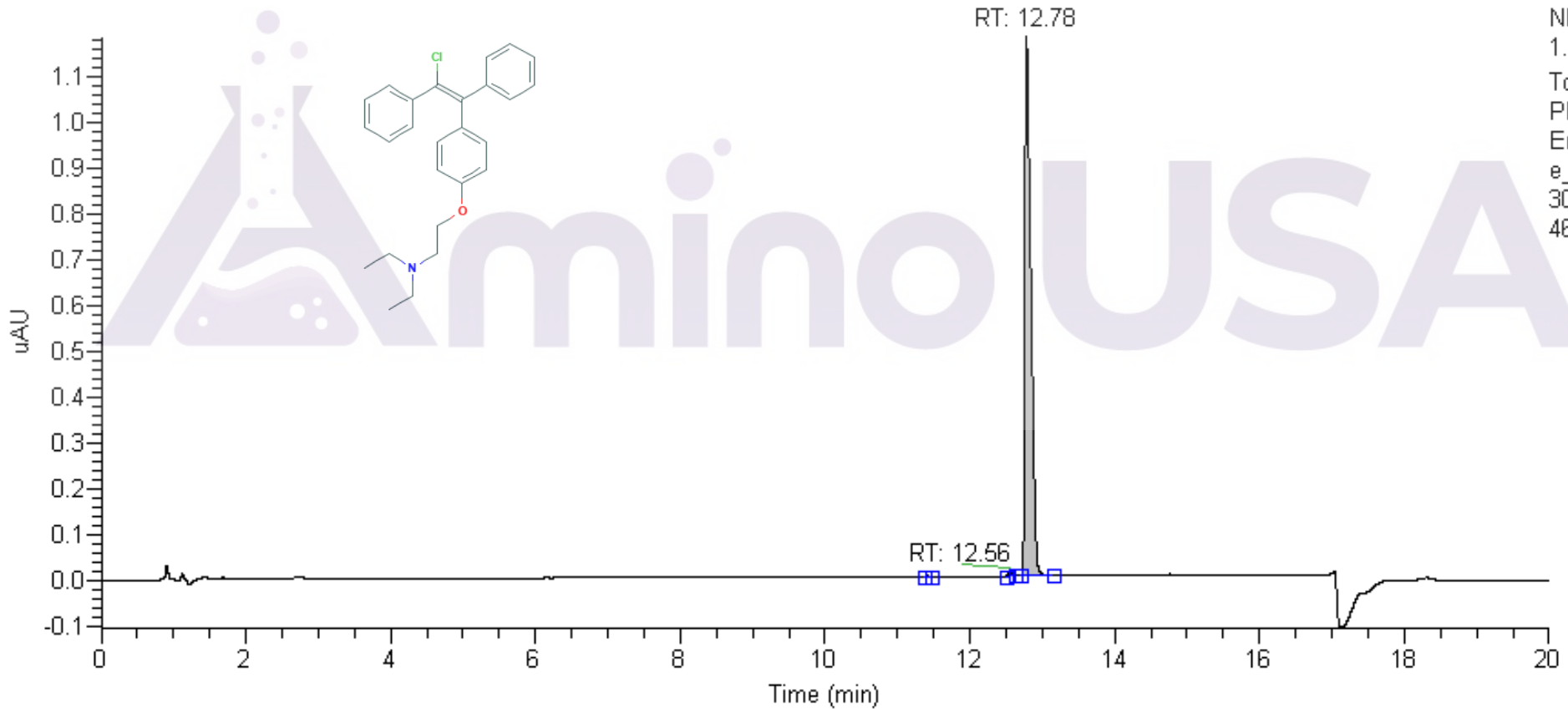
<https://pubchem.ncbi.nlm.nih.gov/compound/6420009>

High Performance Liquid Chromatography (HPLC) UV – Purity Test

Enclomiphene_2024-07-30_240820144645

8/20/2024 2:46:45 PM

RT: 0.00 - 20.00 SM: 3B



PEAK LIST		Number of detected peaks: 3		
	Time (min)	Area	%Area	
1	11.42	4.00E-03	0.06	
2	12.56	3.10E-02	0.46	
3	12.78	6.80E+00	99.48	Enclomiphene

Analysis Performed by
Ken Pendarvis, ChE
Analytical Chemist
MZ Biolabs
contact@mzbiolabs.com



2024-08-20

Enclomiphene

PubChem CID: 6420009

<https://pubchem.ncbi.nlm.nih.gov/compound/6420009>

Mass Spectrometry (MS) – Identity Test

Identity confirmed using HPLC-MS

Molecular weight calculated using monoisotopic m/z values from mass spectrum

Expected monoisotopic mass : 405.19 Da

Measured monoisotopic mass : 405.27 Da

Molecular weight confirmed

Note : Monoisotopic m/z values are not easily seen in full spectrum view for larger molecules and peptides.

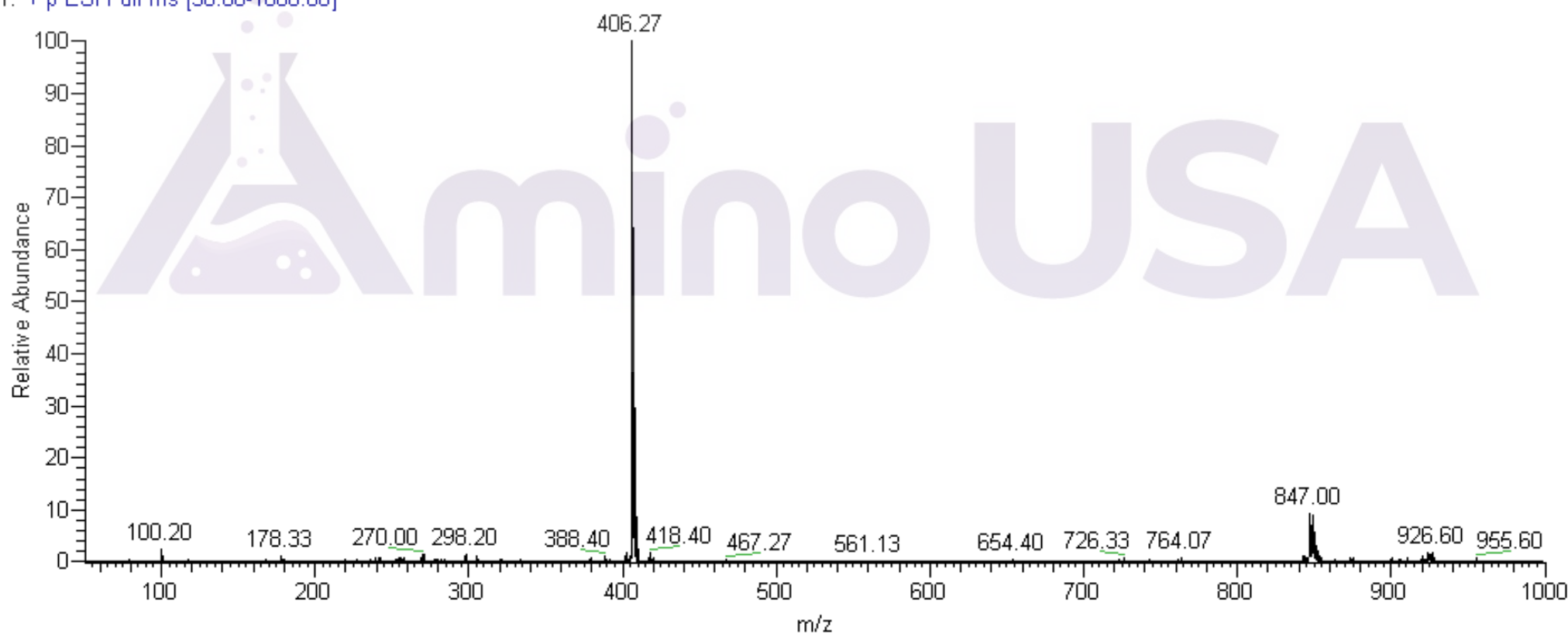
The dominant isotopic peak (base peak) shown in the spectrum below can be used to approximate the average molecular weight frequently reported by vendors and databases as a secondary means of confirmation.

Recorded MS spectrum

Enclomiphene_2024-07-30_240820144645

8/20/2024 2:46:45 PM

Enclomiphene_2024-07-30_240820144645 #825 RT: 12.84 AV: 1 NL: 4.15E8
T: + p ESI Full ms [50.00-1000.00]



Analysis Performed by
Ken Pendarvis, ChE
Analytical Chemist
MZ Biolabs
contact@mzbiolabs.com



2024-08-20