

Client: **Amino USA**  
[info@aminousa.com](mailto:info@aminousa.com)  
[www.aminousa.com](http://www.aminousa.com)

Sample received: **01/30/25**  
 Analysis conducted: **01/31/25**

<b>Compound:</b>	Sermorelin	<b>CAS:</b>	86168-78-7
<b>Batch/Lot #:</b>	25SERM15-0001	<b>Formula:</b>	C149H246N44O42S
<b>Appearance:</b>	White lyophilized powder	<b>Mol Wt:</b>	3357.93 g/mol

**Method:** Qualitative and Quantitative chemical analysis by LC-MS with UV detection

**Pubchem CID:** 16132413

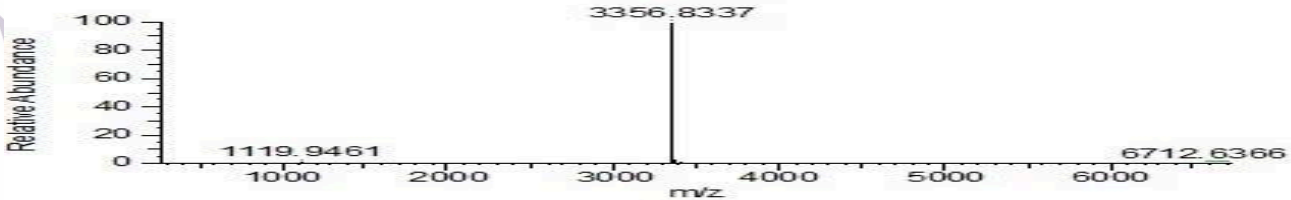
[Sermorelin | C149H246N44O42S | CID 16132413 - PubChem](#)

	Specification	Result	
<b>Identity Test:</b>	Sermorelin	Sermorelin	<b>Conforms</b>
<b>Quantity:</b>	15 mg	<b>15mg</b>	<b>Conforms</b>
<b>Purity:</b>	>98	<b>99.68%</b>	<b>Conforms</b>

RT : 0.00-6.50



Sermorelin15mg\_06 #606 RT: 5.13 AV: 1 NL: 4.21E7  
 T: FTMS + p ESI Full ms [250.0000-3500.0000] IIT (ms): 21.2390



Analysis Performed by  
 Dr. Roberto Marin  
 Analytical Chemist  
[contact@bioregen.com](mailto:contact@bioregen.com)

*Roberto Marin*

**COA #10040**  
 Security Key **AMINO2050**  
[bioregen.com/verify](http://bioregen.com/verify)

