

Client: **Amino USA**  
[info@aminousa.com](mailto:info@aminousa.com)  
[www.aminousa.com](http://www.aminousa.com)

Sample received: **01/20/25**  
 Analysis conducted: **01/22/25**

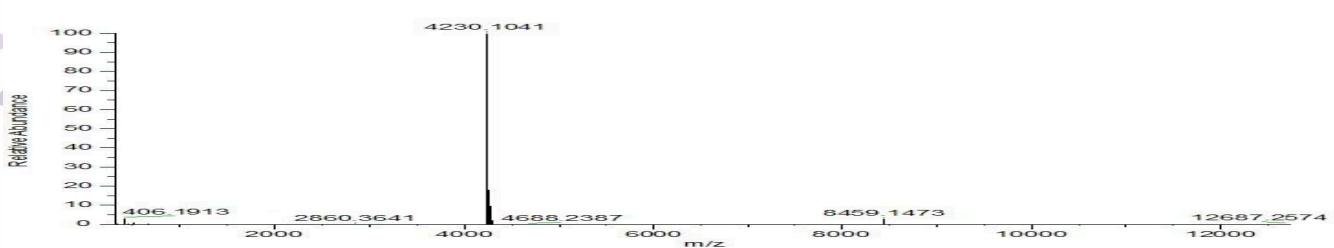
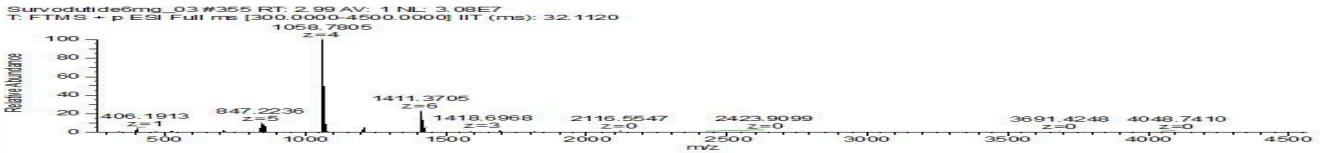
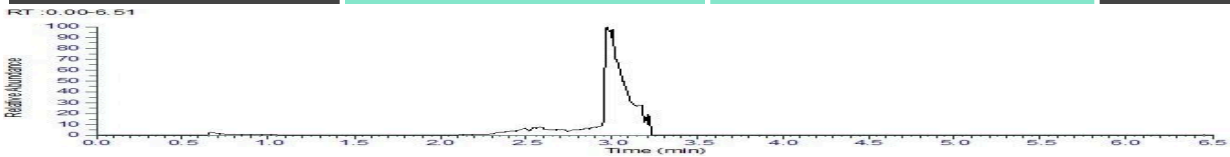
|                     |                          |                 |                |
|---------------------|--------------------------|-----------------|----------------|
| <b>Compound:</b>    | Survodutide              | <b>CAS:</b>     | 2805997-46-8   |
| <b>Batch/Lot #:</b> | 25SURV6-0001             | <b>Formula:</b> | C192H289N47O61 |
| <b>Appearance:</b>  | White lyophilized powder | <b>Mol Wt:</b>  | 4231.692 g/mol |

**Method:** Qualitative and Quantitative chemical analysis by LC-MS with UV detection

**Pubchem CID:** 168429725

[Survodutide | C192H289N47O61 | CID 168429725 - PubChem](#)

|                       | Specification | Result      |                 |
|-----------------------|---------------|-------------|-----------------|
| <b>Identity Test:</b> | Survodutide   | Survodutide | <b>Conforms</b> |
| <b>Quantity:</b>      | 6 mg          | 6.13 mg     | <b>Conforms</b> |
| <b>Purity:</b>        | >98           | 99.21 %     | <b>Conforms</b> |



Analysis Performed by  
 Dr. Roberto Marin  
 Analytical Chemist  
[contact@bioregen.com](mailto:contact@bioregen.com)

*Roberto Marin*

COA #10033  
 Security Key **AMINO2050**  
[bioregen.com/verify](http://bioregen.com/verify)

