

Client: **Amino USA**
info@aminousa.com
www.aminousa.com

Sample received: **01/20/25**
 Analysis conducted: **01/22/25**

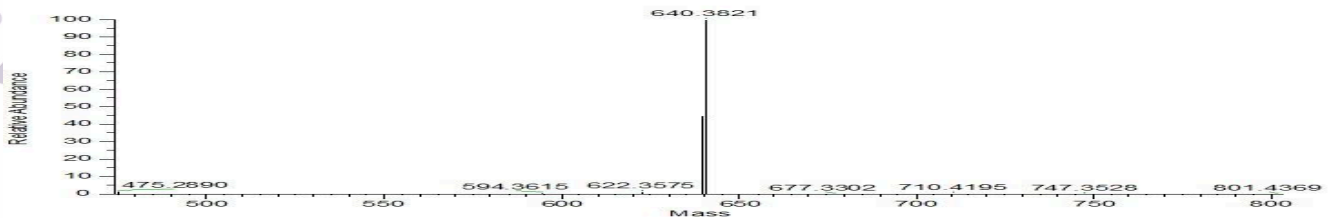
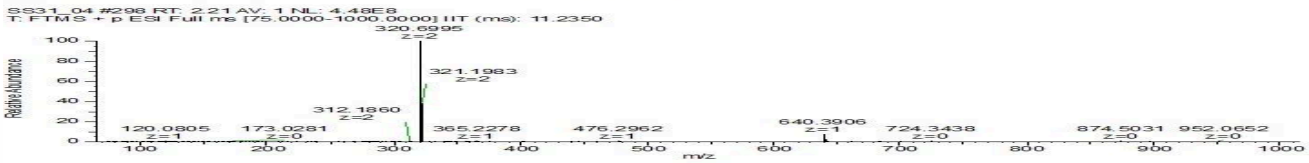
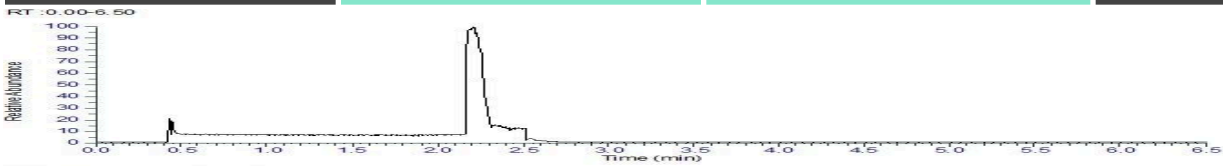
Compound:	SS 31	CAS:	736992-21-5
Batch/Lot #:	25SS15-0001	Formula:	C32H49N9O5
Appearance:	White lyophilized powder	Mol Wt:	639.8 g/mol

Method: Qualitative and Quantitative chemical analysis by LC-MS with UV detection

Pubchem CID: 11764719

[SS31 | C32H49N9O5 | CID 11764719 - PubChem](#)

	Specification	Result	
Identity Test:	SS 31	SS 31	Conforms
Quantity:	15 mg	15.7 mg	Conforms
Purity:	> 98	99.67 %	Conforms



Analysis Performed by
 Dr. Roberto Marin
 Analytical Chemist
contact@bioregen.com

Roberto Marin

COA #10032
 Security Key **AMINO2050**
bioregen.com/verify

