

Client: **Amino USA**  
[info@aminousa.com](mailto:info@aminousa.com)  
[www.aminousa.com](http://www.aminousa.com)

Sample received: **01/14/25**  
 Analysis conducted: **01/15/25**

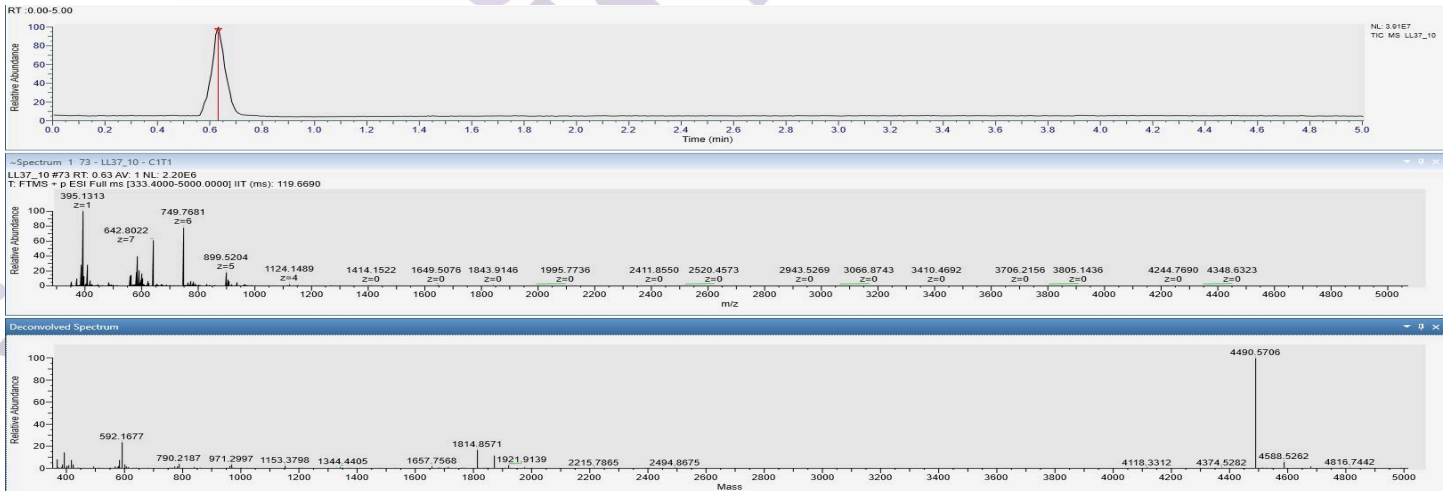
<b>Compound:</b>	LL-37	<b>CAS:</b>	154947-66-7
<b>Batch/Lot #:</b>	25LL5-0001	<b>Formula:</b>	C205H340N60O53
<b>Appearance:</b>	White lyophilized powder	<b>Mol Wt:</b>	4493.32 g/mol

**Method:** Qualitative and Quantitative chemical analysis by LC-MS with UV detection

**Pubchem CID:** 16198951

**LL-37 | C205H340N60O53 | CID 16198951**

	Specification	Result	
<b>Identity Test:</b>	LL 37	LL 37	<b>Conforms</b>
<b>Quantity:</b>	5 mg	5 mg	<b>Conforms</b>
<b>Purity:</b>	>98	99.2%	<b>Conforms</b>



Analysis Performed by  
 Dr. Roberto Marin  
 Analytical Chemist  
[contact@bioregen.com](mailto:contact@bioregen.com)

*Roberto Marin*

**COA #10027**  
 Security Key **AMINO2050**  
[bioregen.com/verify](http://bioregen.com/verify)

