

**Client: Amino USA**  
[info@aminousa.com](mailto:info@aminousa.com)  
[www.aminousa.com](http://www.aminousa.com)

Sample received: **12/18/24**  
Analysis conducted: **12/27/24**

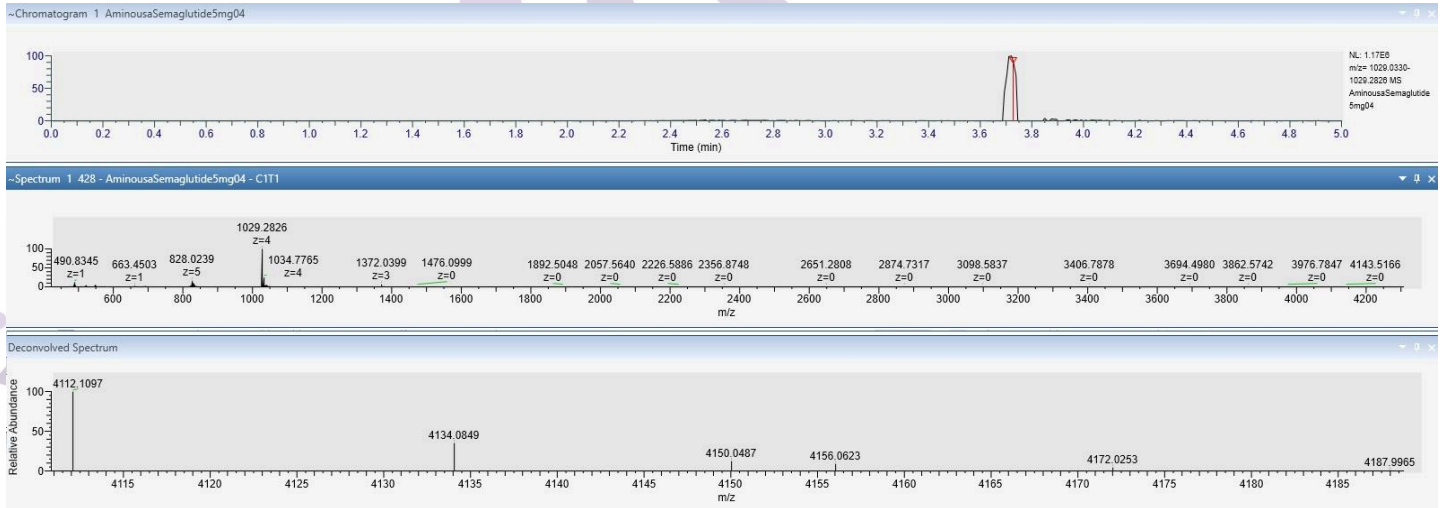
|                     |                          |                 |                |
|---------------------|--------------------------|-----------------|----------------|
| <b>Compound:</b>    | Semaglutide              | <b>CAS:</b>     | 910463-68-2    |
| <b>Batch/Lot #:</b> | 24SEMA5-0004             | <b>Formula:</b> | C187H291N45O59 |
| <b>Appearance:</b>  | White lyophilized powder | <b>Mol Wt:</b>  | 4113.641 g/mol |

**Method:** Qualitative and Quantitative chemical analysis by LC-MS with UV detection

**Pubchem CID:** 56843331

[Semaglutide | C187H291N45O59 | CID 56843331 - PubChem](#)

|                       | Specification | Result        |                 |
|-----------------------|---------------|---------------|-----------------|
| <b>Identity Test:</b> | Semaglutide   | Semaglutide   | <b>Conforms</b> |
| <b>Quantity:</b>      | 5mg           | <b>5.10mg</b> | <b>Conforms</b> |
| <b>Purity:</b>        | >98%          | <b>99.85%</b> | <b>Conforms</b> |



Analysis Performed by  
Dr. Roberto Marin  
Analytical Chemist  
[contact@bioregen.com](mailto:contact@bioregen.com)

*Roberto Marin*

**COA #10026**  
Security Key **AMINO2050**  
[bioregen.com/verify](http://bioregen.com/verify)

