

Client: **Amino USA**  
[info@aminousa.com](mailto:info@aminousa.com)  
[www.aminousa.com](http://www.aminousa.com)

Sample received: **12/27/24**  
 Analysis conducted: **1/10/25**

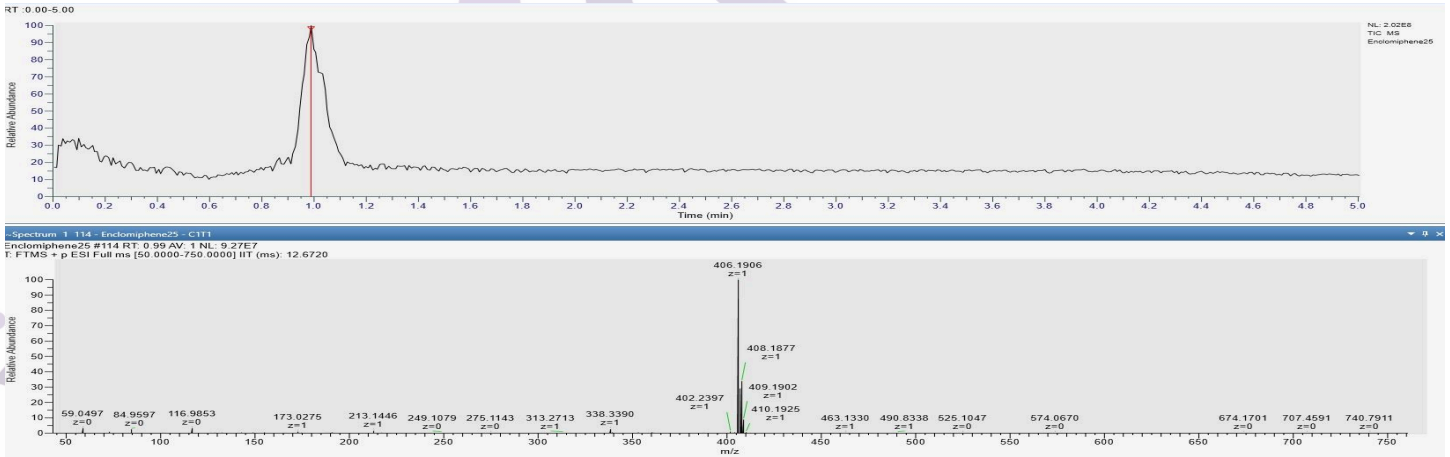
<b>Compound:</b>	Enclomiphene	<b>CAS:</b>	15690-57-0
<b>Batch/Lot #:</b>	25ENCLO-0003	<b>Formula:</b>	C <sub>26</sub> H <sub>28</sub> CINO
<b>Appearance:</b>	White lyophilized powder	<b>Mol Wt:</b>	405.97 g/mol

**Method:** Qualitative and Quantitative chemical analysis by LC-MS with UV detection

**Pubchem CID:** 1548953

[Enclomiphene | C<sub>26</sub>H<sub>28</sub>CINO | CID 1548953 - PubChem](#)

	Specification	Result	
<b>Identity Test:</b>	Enclomiphene	Enclomiphene	<b>Conforms</b>
<b>Quantity:</b>	N/A	N/A	
<b>Purity:</b>	>98%	100%	<b>Conforms</b>



Analysis Performed by  
 Dr. Roberto Marin  
 Analytical Chemist  
[contact@bioregen.com](mailto:contact@bioregen.com)

*Roberto Marin*

**COA #10023**  
 Security Key **AMINO2050**  
[bioregen.com/verify](http://bioregen.com/verify)

